

"CONCOURSE QUALITY, HOBBYIST PRICE"



www.martiauto.com  
13238 W Butler Drive  
El Mirage, AZ 85335  
Phone (623) 935-2558  
Fax (623) 935-2579

## DELUXE MARTI REPORT



Proud to display this symbol

Copyright Kevin Marti 2021

Thank you for your interest in our services. We have determined the following information for your vehicle from the Ford Database we have:

12345678901234567890123456789012345678901234567890123456789012345678901234567890  
X26SKBJ90491556 MMZ295Z21C4348 DFBFDR2PGB4I47 2HN 4 SKR 72H3 71E073 6C

### DOOR DATA PLATE INFORMATION

Serial Number **X26SKBJ9049**

X26 F-250 4x4 Super Cab Pickup Truck  
S 400-2V Engine  
K Built at Kansas City  
BJ9049 Serial Number of this Ford Truck scheduled for production at Kansas City

155 Wheelbase (inches)  
G Chrome Yellow Paint, Ford #1526-A  
X262 F-250 4x4 Super Cab Pickup Truck 8500 Lb. GVW  
MZM Saddle Vinyl Ranger XLT Lariat Bench Seat / Super Cab Styleside  
G Automatic Transmission  
B4I 4.10 Dana 60 Limited Slip Rear Axle with 4500 Lb. Front Axle&Power Steering&Tilt Steering Wheel  
08500 Gross Vehicle Weight in Pounds  
1978 Model Year  
71 Los Angeles DSO (District Sales Office)

ORDER TYPE: FLEET

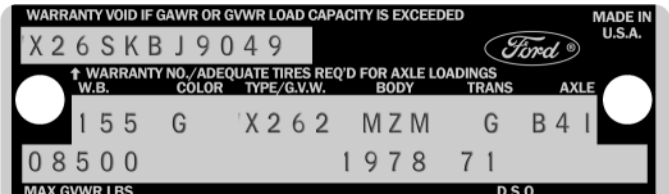
DSO ITEM #: 4348

DEALER #: 71E073

ROBINSON-ERICKSON FORD  
650 EAST LAS TUNAS DRIVE  
SAN GABRIEL CA 91776

Your vehicle was equipped with the following features:

- Super Cab Option
- Delete TuTone Paint
- CB Radio
- California Emissions System
- Sliding Rear Window
- Tool Stowage Box
- Reduced Noise Exhaust System
- Tilt Steering Wheel
- 4500 Lb. Front Axle
- 9.50x16.5-10 Ply Rated Black Sidewall Tires
- Standard Spare Tire
- Leather Steering Wheel



### IMPORTANT DATES

ORDER RECEIVED: 02/15/78  
CAR SERIALIZED: 03/03/78  
BUCKED: 04/05/78  
SCHEDULED FOR BUILD: 03/21/78  
ACTUALLY BUILT: 04/14/78  
RELEASED: 04/15/78  
SOLD: 05/01/78

### STATISTICS

Your vehicle was one of:

**59** With this Paint Code  
**1** With these Paint/Trim Codes  
**5,135** With these Engine/Transmission Codes  
**224** Ordered from this DSO  
**10,411** With Super Cab Option  
For the 1978 F-250 4x4 Super Cab Pickup Truck

- Heavy Duty Towing Package/Trailer Special
- Hood Lock Release
- Speed Control
- Air Conditioner
- AM/FM Stereo Radio
- Forward Facing Rear Seat
- Visibility Group
- Tinted Glass
- Flipper Rear Quarter Windows
- Super Cooling Radiator
- Bright Grille
- Standard and Heavy Duty 68 Amp Dual Batteries
- Convenience Group
- Midship Fuel Tank w/Standard Tank
- Ranger XLT Lariat Package

Your vehicle was actually produced on April 14, 1978 -- twenty-four days behind schedule.

*Kevin Marti*

Kevin Marti