

"CONCOURSE QUALITY, HOBBYIST PRICE"



www.martiauto.com
13238 W Butler Drive
El Mirage, AZ 85335
Phone (623) 935-2558
Fax (623) 935-2579

DELUXE MARTI REPORT



Proud to display this symbol

Copyright Kevin Marti 2021

Thank you for your interest in our services. We have determined the following information for your vehicle from the Ford Database we have:

12345678901234567890123456789012345678901234567890123456789012345678901234567890
F26YRC562901338 4LG25J 17F794X 7828 EESF2 4A24JB5 3 3 263 74H5032 F 3

DOOR DATA PLATE INFORMATION

Serial Number **F26YRC56290**

F26 F-250 4x4 Pickup Truck
Y 360-2V Engine
R Built at San Jose
C56290 Serial Number of this Ford Truck scheduled for production at San Jose

133 Wheelbase (inches)
8 Hatteras Green Metallic Paint, Ford #5233-A
F262 F-250 4x4 Pickup Truck 7700 Lb. GVW
LG4 Green Super Soft Vinyl Ranger XLT Bench Seat / Styleside
A 4-Speed New Process Manual Transmission
24J 4.10 Dana 60 Conventional Rear Axle with Power Steering
07700 Gross Vehicle Weight in Pounds
1976 Model Year
747828 Seattle Ordering District under Paint or Tire Order # 7828

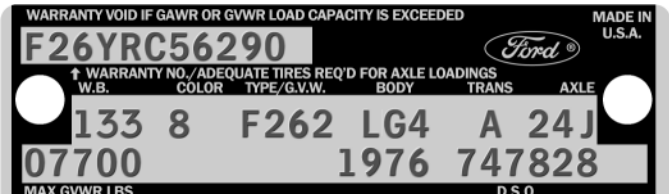
ORDER TYPE: RETAIL
DSO ITEM #: 794X
DEALER #: 74H503
GATEWAY FORD
915 E FIRST ST
NEWBERG OR 97132

Your vehicle was equipped with the following features:

- Ranger XLT Package
- Lime Tape Stripes
- Ammeter & Oil Gauges
- Reduced Noise Exhaust System
- Power Steering
- 7.50x16-10 Ply Rated Black Sidewall Tires
- Spare Wheel
- Locking Gas Cap
- AM Radio
- Tinted Glass
- Free Running Front Hubs
- Rear Step Bumper

Your vehicle was actually produced on June 24, 1976 -- seven days behind schedule.

Kevin Marti



IMPORTANT DATES

ORDER RECEIVED: 05/14/76
CAR SERIALIZED: 05/28/76
BUCKED: 06/23/76
SCHEDULED FOR BUILD: 06/17/76
ACTUALLY BUILT: 06/24/76
RELEASED: 06/28/76
SOLD: 09/09/76

STATISTICS

Your vehicle was one of:

4,990 With this Paint Code
82 With these Paint/Trim Codes
39,319 With these Engine/Transmission Codes
5,630 Ordered from this DSO
5,478 With Ranger XLT Package
For the 1976 F-250 4x4 Pickup Truck