

"CONCOURSE QUALITY, HOBBYIST PRICE"



www.martiauto.com
13238 W Butler Drive
El Mirage, AZ 85335
Phone (623) 935-2558
Fax (623) 935-2579

DELUXE MARTI REPORT



Proud to display this symbol

Copyright Kevin Marti 2022

Thank you for your interest in our services. We have determined the following information for your vehicle from the Ford Database we have:

1234567890123456789012345678901234567890123456789012345678901234567890
F35JRCG3936140S 4CB6 1 1465578 FF8G22MG36A47 4 5 9 7 H3 71D00985H

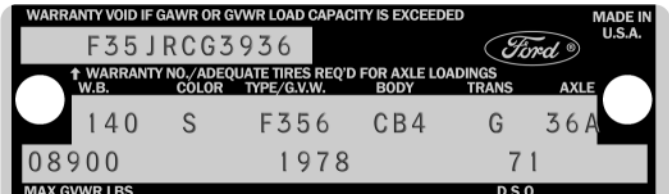
DOOR DATA PLATE INFORMATION

Serial Number **F35JRCG3936**

F35 F-350 Regular Pickup Truck
J 460-4V Engine
R Built at San Jose
CG3936 Serial Number of this Ford Truck scheduled for production at San Jose

140 Wheelbase (inches)
S Bright Dark Blue Metallic Paint, Ford #5094-A
F356 F-350 Regular Pickup Truck 8900 Lb. GVW
CB4 Blue Cloth/Vinyl Ranger XLT Bench Seat / Styleside
G Automatic Transmission
36A 3.73 Dana 70 Conventional Rear Axle with Tilt Steering Wheel
08900 Gross Vehicle Weight in Pounds
1978 Model Year
71 Los Angeles DSO (District Sales Office)

ORDER TYPE: RETAIL
DSO ITEM #: 5578
DEALER #: 71D009
FAIRWAY FORD
1350 E YORBA LINDA
PLACENTIA CA 92670



IMPORTANT DATES

ORDER RECEIVED: 06/15/78
CAR SERIALIZED: 06/16/78
BUCKED: 06/30/78
SCHEDULED FOR BUILD: 07/14/78
ACTUALLY BUILT: 07/07/78
RELEASED: 07/08/78
SOLD: 07/12/78

STATISTICS

Your vehicle was one of:
775 With this Paint Code
103 With these Paint/Trim Codes
3,838 With these Engine/Transmission Codes
1,262 Ordered from this DSO
1,947 With Ranger XLT Package
For the 1978 F-350 Regular Pickup Truck

Your vehicle was equipped with the following features:

- Ammeter and Oil Pressure Gauges
- California Emissions System
- Reduced Noise Exhaust System
- Sliding Rear Window
- Tilt Steering Wheel
- 9.50x16.5-10 Ply Rated Black Sidewall Tires
- Speed Control
- Air Conditioner
- Tinted Glass
- Visibility Group
- Super Cooling Radiator
- Bright Grille
- Convenience Group
- Midship Fuel Tank w/Standard Tank
- Chrome Rear Step Bumper
- Ranger XLT Package

Your vehicle was actually produced on July 7, 1978 -- seven days ahead of schedule.

Kevin Marti